

**GJURA BELI BELO PLATNO**

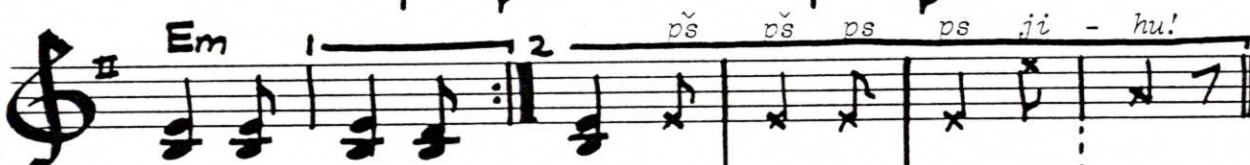
(Pajduško)

♩ = 92

INTRO &amp; INTERLUDE



VOCAL



Instrumental

First measure of  
InterludePATTERN: Play 5x as written, omitting Interlude entry last time.

There is a subtle shift in meter from the Intro/Interlude to the Vocal,  
but the steady "short-long" feeling carries through:

short-long = ♩ in 5/8 = ♩ in 3/8

Guitar and accordion players: it is easier to make this transition  
smoothly if you play the entire chord for both short and long beats,  
rather than playing a "boom-chunk" or "oom-pah".